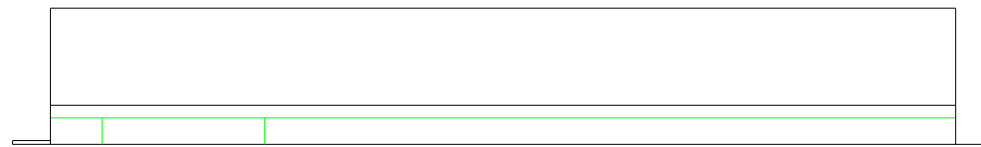
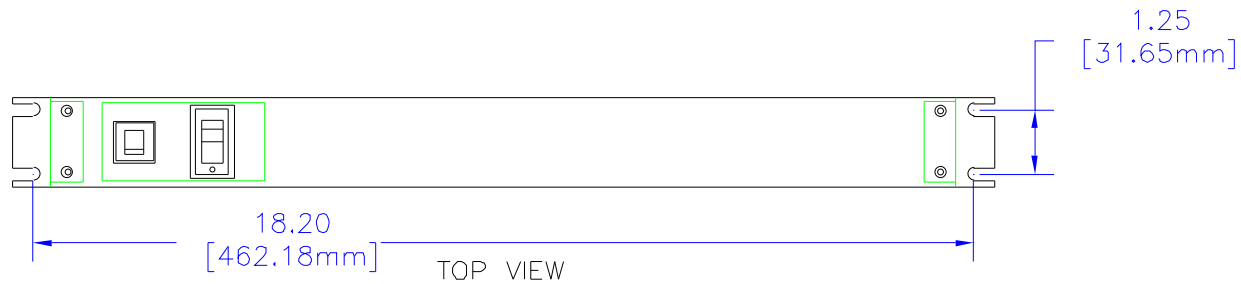


## NOTES

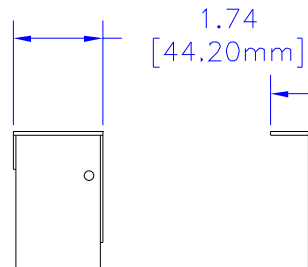
DESIGNED FOR POWER DISTRIBUTION FROM REAR OF UNIT.  
 TOUGH STEEL CASE AVAILABLE IN ASA 61 GRAY OR BLACK POWDER PAINT.  
 HEAVY-DUTY POWER CORD - 14/3 SJTW FOR EXTREME TEMPERATURE RANGES. COMES IN 6' OR 15' LONG.  
 INTEGRAL MOLDED PLUG AVAILABLE IN STRAIGHT BLADE (NEMA 5-15P) OR TWIST-LOCK (NEMA L5-15P) CONFIGURATIONS.  
 COMES WITH LIGHTED ON/OFF SWITCH.  
 INCLUDES 15A, 125VAC CIRCUIT BREAKER TO PREVENT LINE OVERLOAD.  
 CSA CERTIFIED, UL RECONIZED-UNDER THE COMPONENT PROGRAM OF UL



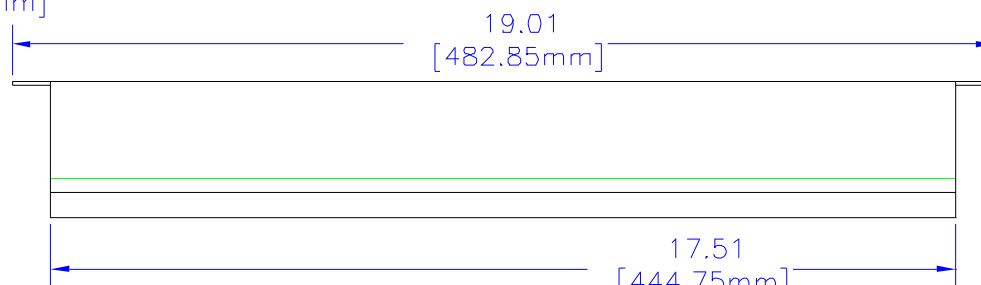
SIDE VIEW



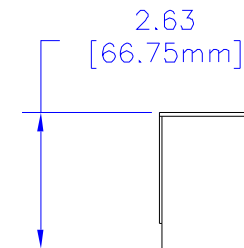
TOP VIEW



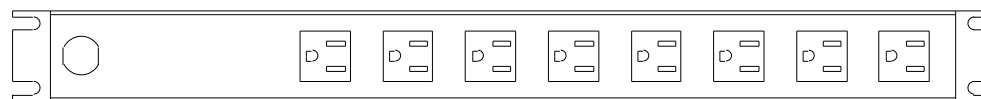
L. END VIEW



SIDE VIEW



R. END VIEW



BOTTOM VIEW

\*SEE CATALOG FOR THE COMPLETE PART NUMBER BASED ON THE OPTIONS LISTED IN THE NOTE SECTION

UNLESS OTHERWISE SPECIFIED  
 DIMENSIONS ARE IN INCHES  
 X +/- .1  
 XX +/- .02  
 XXX +/- .015  
 FITS +/- .005  
 ANGLES +/- 5 DEG.  
 NOTICE  
 HAMMOND CLAIMS PROPRIETARY RIGHTS TO THE MATERIAL ON THIS DRAWING. IT IS INTENDED TO BE USED AS A REFERENCE FOR ENGINEERING INFORMATION ONLY. THIS INFORMATION MAY NOT BE USED TO MANUFACTURE PRODUCTS WITHOUT WRITTEN PERMISSION FROM HAMMOND MANUFACTURING.



HAMMOND  
 MANUFACTURING

WEB: WWW.HAMMONDMFG.COM

TITLE		HAMMOND RACK MOUNT POWER PANELS	
DRAWN BY	MJM	DATE	02/09/01
SCALE		PAGE	1 OF 1
PART NUMBER		1583H8***	