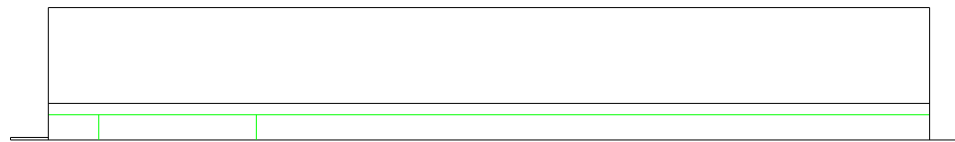
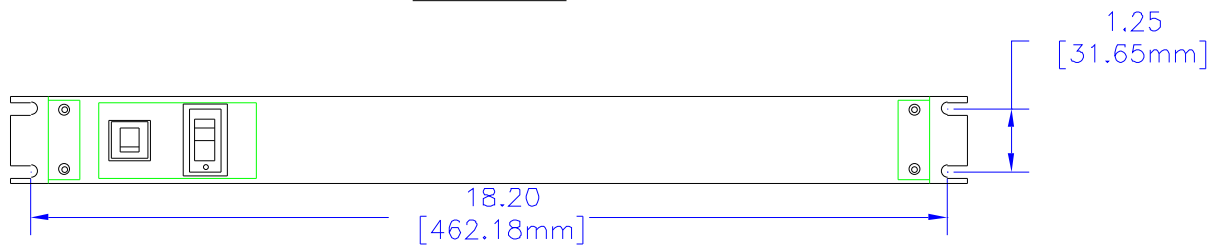


NOTES

DESIGNED FOR POWER DISTRIBUTION FROM REAR OF UNIT.
 TOUGH STEEL CASE AVAILABLE IN ASA 61 GRAY OR BLACK POWDER PAINT.
 HEAVY-DUTY POWER CORD - 14/3 SJTW FOR EXTREME TEMPERATURE RANGES. COMES IN 6' OR 15' LONG.
 INTEGRAL MOLDED PLUG AVAILABLE IN STRAIGHT BLADE (NEMA 5-15P) OR TWIST-LOCK (NEMA L5-15P) CONFIGURATIONS.
 COMES WITH LIGHTED ON/OFF SWITCH.
 INCLUDES 15A, 125VAC CIRCUIT BREAKER TO PREVENT LINE OVERLOAD.
 CSA CERTIFIED, UL RECONIZED-UNDER THE COMPONENT PROGRAM OF UL

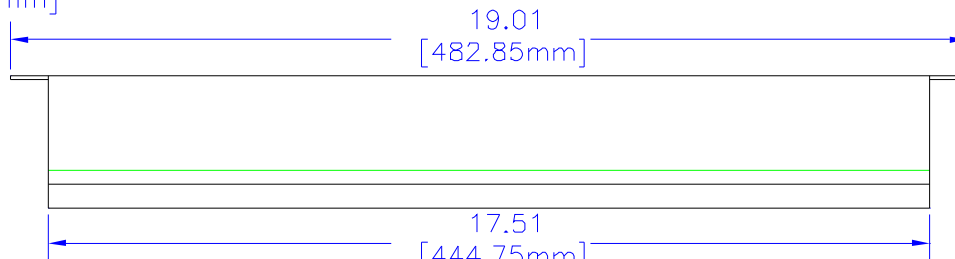


SIDE VIEW



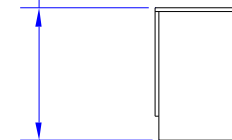
TOP VIEW

1.74
[44.20mm]

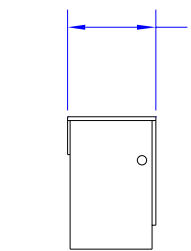


SIDE VIEW

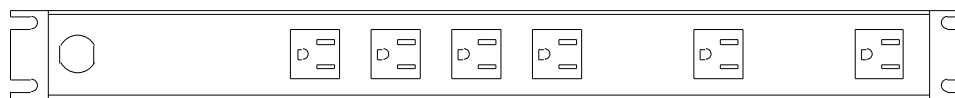
2.63
[66.75mm]



R. END VIEW



L. END VIEW



BOTTOM VIEW

*SEE CATALOG FOR THE COMPLETE PART NUMBER BASED ON THE OPTIONS LISTED IN THE NOTE SECTION

UNLESS OTHERWISE SPECIFIED
 DIMENSIONS ARE IN INCHES
 X +/- .1
 XX +/- .02
 XXX +/- .010
 CUTS +/- .005
 ANGLES +/- .5 DEG.
 NOTE
 HAMMOND CLAIMS PROPRIETARY RIGHTS TO THE MATERIAL IN THIS DRAWING. IT IS INTENDED TO BE USED AS A REFERENCE FOR ENGINEERING INFORMATION ONLY. THIS INFORMATION MAY NOT BE USED TO MANUFACTURE PRODUCT WITHOUT WRITTEN PERMISSION FROM HAMMOND MANUFACTURING.



HAMMOND
 MANUFACTURING

WEB: WWW.HAMMONDMFG.COM

TITLE	
HAMMOND RACK MOUNT POWER PANELS	
DRAWN BY	DATE
MJM	02/09/01
SCALE	PAGE
	1 OF 1
PART NUMBER	
1583H6****	