

2U Cobra 135-A Rail for Dell

SKU: 122-9089

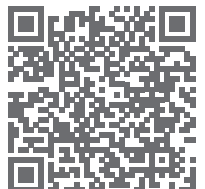
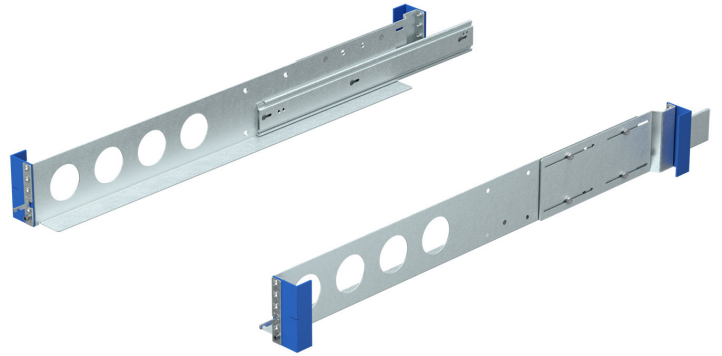
The 2U Cobra 135-A Rail for Dell provides a stable, sturdy and easy-to-install sliding rail solution for the Dell PowerEdge R760xd2. These slide rails are compatible with standard 19" EIA-310 server racks, and only mount in 4 post server racks with square, round, and #12 threaded holes. Designed to last longer than ball-bearing rail kits, the dry slides allow you to extend equipment in and out of your server rack for easier serviceability.

Mounts in 4 Post Racks

- Only compatible with the Dell PowerEdge R760xd2
- Mounting depth: 27 - 30" (686 - 762mm)
- Slam latch fully secures the server into place
- Sliding rack rails provides easy serviceability

Alternative to Dell OEM Rail Kits

- High-quality dry slide that lasts longer than ball bearing kits
- Works with all EIA 19" standard racks
- Supports L and C rack upright shapes
- Works with square, round, and #12 threaded holes racks
- Original Dell rail kit not required



RackSolutions.com

Toll Free: 1-888-505-RACK | Email: info@racksolutions.com