

# CUSTOM BEZELS



Custom bezels made easy. Get professional custom bezels for the most popular Dell servers.

**Choose from 62 colors, 8 hole patterns with different hole types and badge locations, and 6 badge shapes.**

These custom bezels are available for the Dell 860, R200, R300, R805, CR100, SC1425, SC1435, 1950, 2950 and 2970.

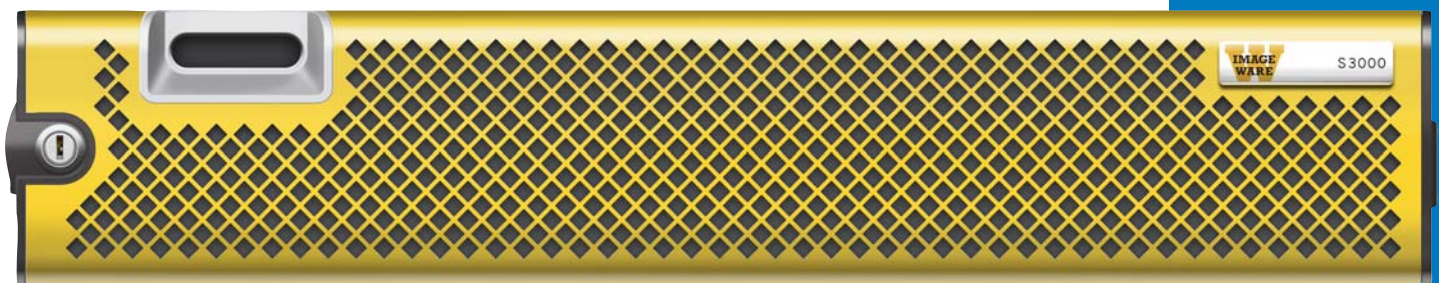
These high quality steel bezels are made using Dell end caps, locks, and windows. Select the style that represents your company best.



BZL-860-H1B-000 with Brushed Stainless Steel finish.



BZL-1950-R1A-013



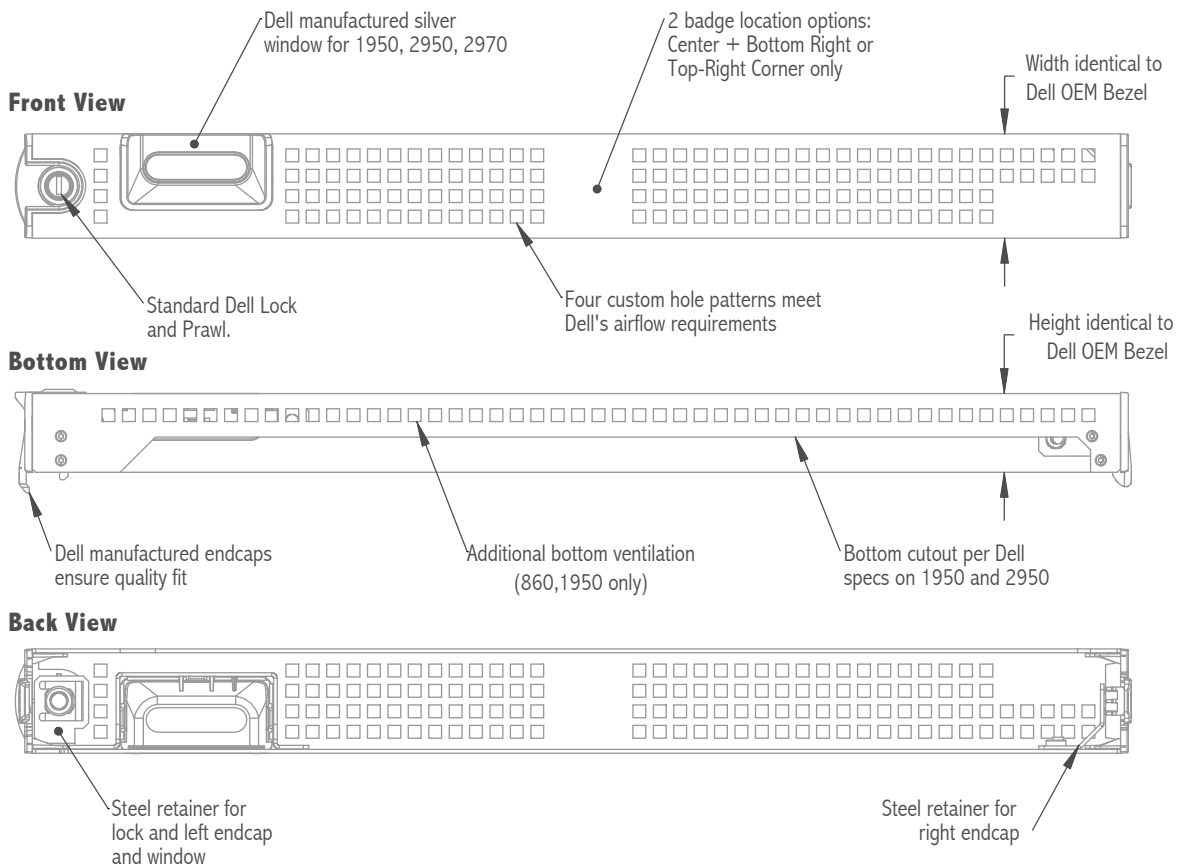
BZL-2950-D1B-010



BZL-2950-S1A-017

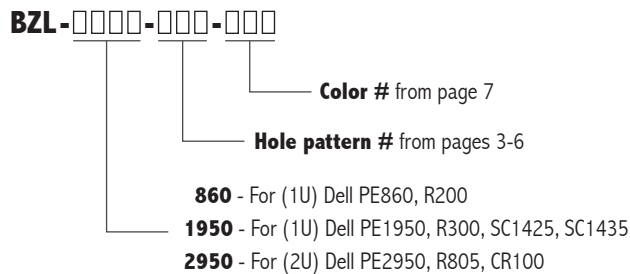
## OVERVIEW

- Server Fit:** These custom bezels are made to the same dimensional standards as Dell factory bezels. The end caps and LED window are the exact same as used on Dell factory bezels, ensuring quality fit and server compatibility. The lock is also the same as Dell's, but the keys are not branded with Dell's logo.
- Color:** Each bezel is powder coated with quality Cardinal® paint. Choose from 62 colors as shown on page 7. Custom colors are available with an additional fee for color matching. A brushed stainless steel finish is also available, which provides a beautiful look that resists visible finger prints.
- Construction:** The bezel is made from steel and manufactured on a state of the art Amada® turret laser. The bezel is supplied fully assembled and ready to install on the server. Badges are purchased and installed separately.
- Badges:** The badge choices are unlimited. Provided are 6 badge styles with full dimensions and Adobe® Illustrator® artwork. Marking Systems, Incorporated will assist in badge style selection and has a 24-48 hour prototyping process. Urethane "bubble badges" are a good choice for a professional look and reasonable minimum orders without custom tooling, see pages 8 and 9 for sizing and artwork guidelines. For more information on badges contact Rosemary Restrepo at Marking Systems: 972-475-0770 x 225 or rosemary@markingsystems.com.
- Choices and Part Number:** Pages 3-6 detail the choices and part number determinations.



## PART NUMBERING

Each bezel is defined by a part number which denotes server type/ventilation pattern, badge shape and location/steel finish or color.



## BEZEL STYLES

Hole pattern # **R1A** (Round Holes)

Bezel part number as shown BZL-860-R1A-000 with Brushed Stainless Steel finish.



Hole pattern # **R1A** (Round Holes)

Bezel part number as shown BZL-1950-R1A-000 with Brushed Stainless Steel finish.



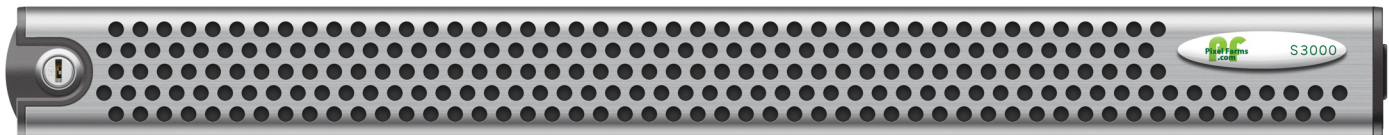
Hole pattern # **R1A** (Round Holes)

Bezel part number as shown BZL-2950-R1A-000 with Brushed Stainless Steel finish.



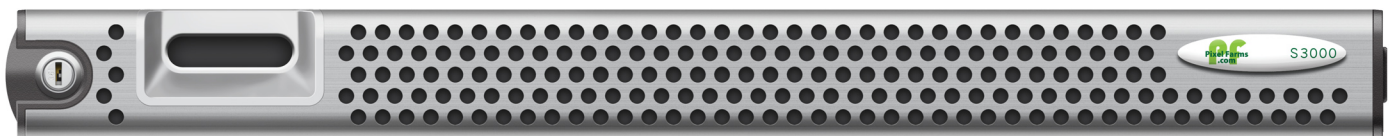
Hole pattern # **R1B** (Round Holes)

Bezel part number as shown BZL-860-R1B-000 with Brushed Stainless Steel finish.



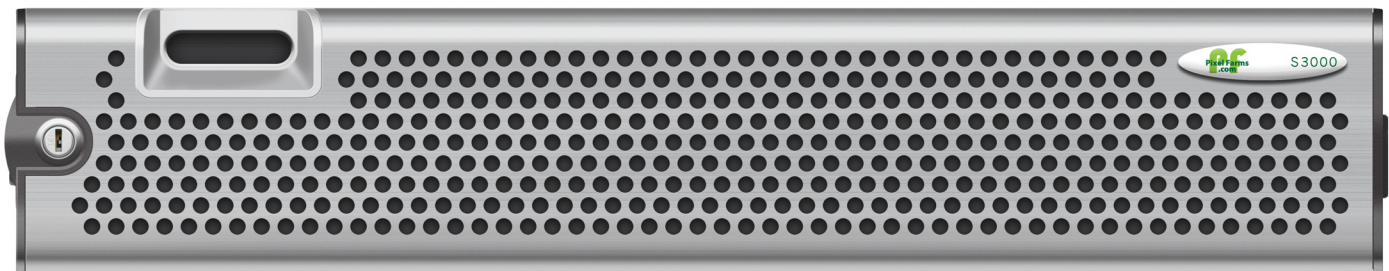
Hole pattern # **R1B** (Round Holes)

Bezel part number as shown BZL-1950-R1B-000 with Brushed Stainless Steel finish.



Hole pattern # **R1B** (Round Holes)

Bezel part number as shown BZL-2950-R1B-000 with Brushed Stainless Steel finish.



## BEZEL STYLES

Hole pattern # **S1A** (Square Holes)

Bezel part number as shown BZL-860-S1A-020



Hole pattern # **S1A** (Square Holes)

Bezel part number as shown BZL-1950-S1A-020



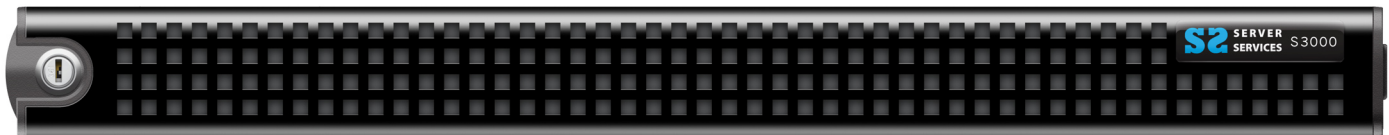
Hole pattern # **S1A** (Square Holes)

Bezel part number as shown BZL-2950-S1A-020



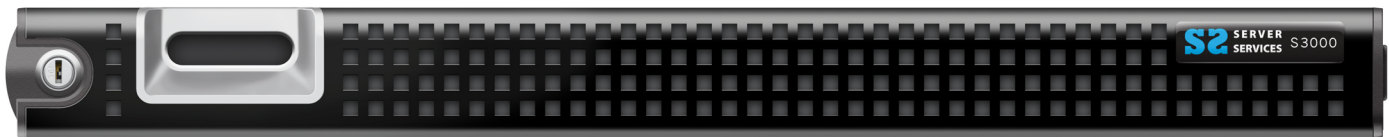
Hole pattern # **S1B** (Square Holes)

Bezel part number as shown BZL-860-S1B-020



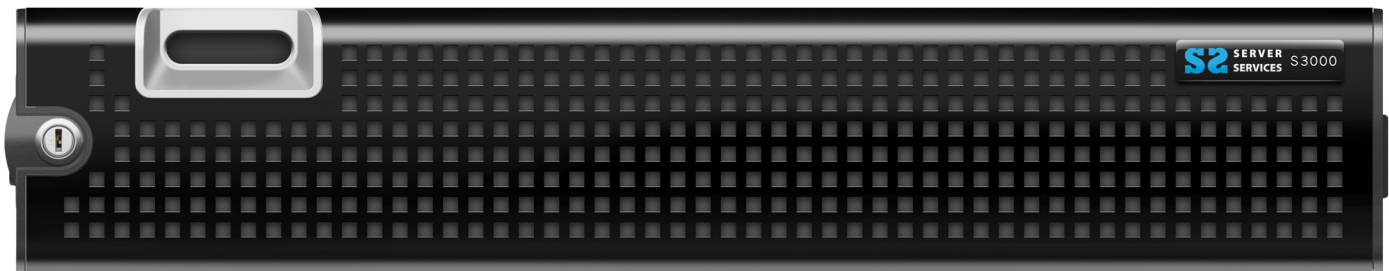
Hole pattern # **S1B** (Square Holes)

Bezel part number as shown BZL-1950-S1B-020



Hole pattern # **S1B** (Square Holes)

Bezel part number as shown BZL-2950-S1B-020



## BEZEL STYLES

Hole pattern # **H1A** (Hexagon Holes)  
Bezel part number as shown BZL-860-H1A-005



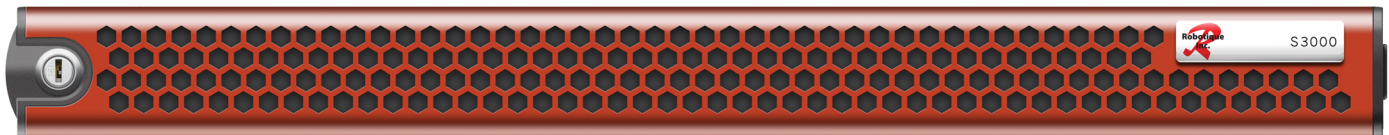
Hole pattern # **H1A** (Hexagon Holes)  
Bezel part number as shown BZL-1950-H1A-005



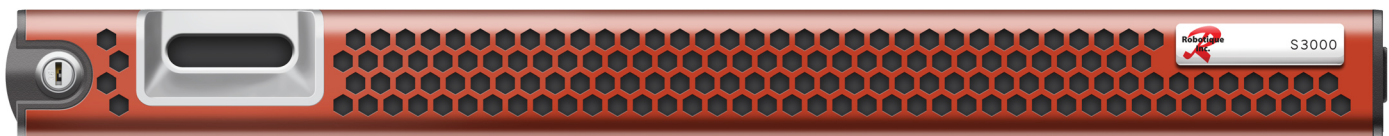
Hole pattern # **H1A** (Hexagon Holes)  
Bezel part number as shown BZL-2950-H1A-005



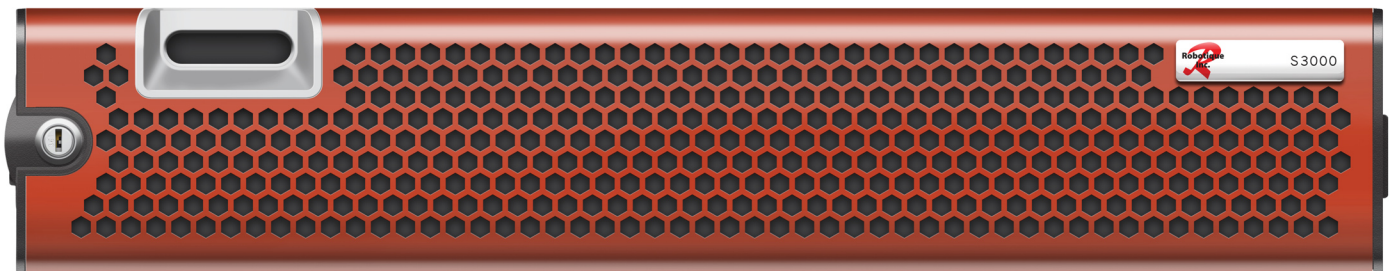
Hole pattern # **H1B** (Hexagon Holes)  
Bezel part number as shown BZL-860-H1B-005



Hole pattern # **H1B** (Hexagon Holes)  
Bezel part number as shown BZL-1950-H1B-005



Hole pattern # **H1B** (Hexagon Holes)  
Bezel part number as shown BZL-2950-H1B-005



## BEZEL STYLES

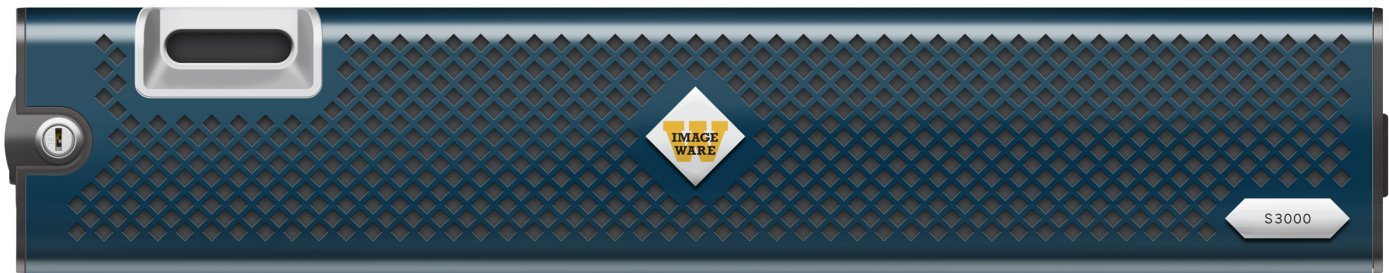
Hole pattern # **D1A** (Diamond Holes)  
Bezel part number as shown BZL-860-D1A-014



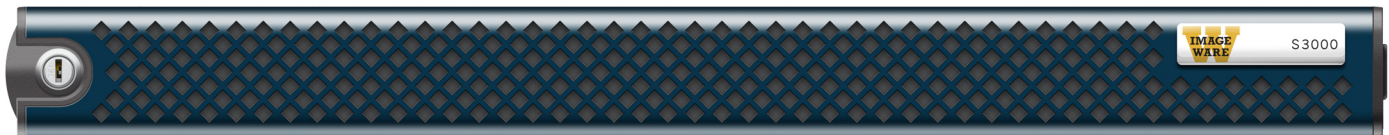
Hole pattern # **D1A** (Diamond Holes)  
Bezel part number as shown BZL-1950-D1A-014



Hole pattern # **D1A** (Diamond Holes)  
Bezel part number as shown BZL-2950-D1A-014



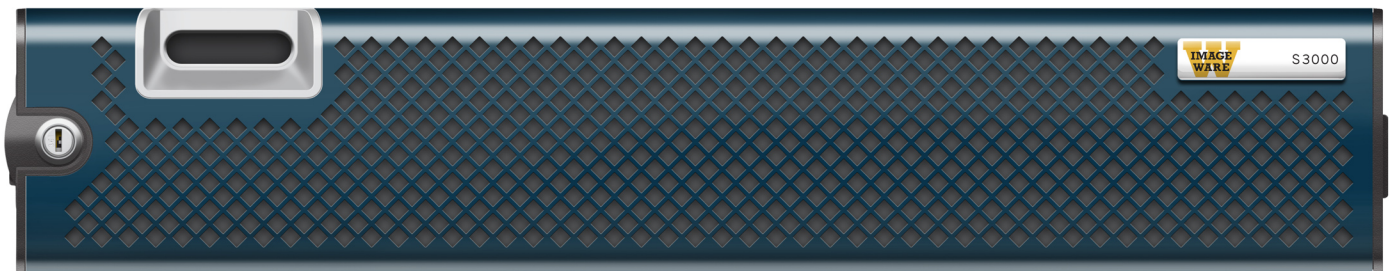
Hole pattern # **D1B** (Diamond Holes)  
Bezel part number as shown BZL-860-D1B-014



Hole pattern # **D1B** (Diamond Holes)  
Bezel part number as shown BZL-1950-D1B-014



Hole pattern # **D1B** (Diamond Holes)  
Bezel part number as shown BZL-2950-D1B-014



## POWDER COAT

**Powder coating is a painting process that produces a highly wear-resistant color coating with gloss or matt finishes.** Powder coating involves applying electrostatically charged dry powder to the steel bezel. After the coating is applied, the bezel is heated so the powder melts evenly to flow over and fuses itself to the steel, forming a thin protective film on the material. This coating is tough, hard, scratch resistant, fade resistant and durable.



**C # 000**  
No Paint  
Brushed SS



**C # 001**  
Black Texture  
T041-BK179



**C # 002**  
Gloss Red  
P009-RD02



**C # 003**  
Gloss Red  
T009-RD03



**C # 004**  
Red Texture  
T241-RD129



**C # 005**  
Gloss Red  
T009-RD01



**C # 006**  
Gloss Orange  
T009-OG26



**C # 007**  
Gloss Orange  
T009-OG01



**C # 008**  
Gloss Yellow  
T009-YL71



**C # 009**  
Gloss Yellow  
T009-YL14



**C # 010**  
Gloss Yellow  
T009-YL01



**C # 011**  
Gloss Green  
T007-GN16



**C # 012**  
Gloss Green  
C006-GN03



**C # 013**  
Gloss Green  
T007-GN13



**C # 014**  
Gloss Blue  
T008-BL20



**C # 015**  
Gloss Blue  
T009-BL01



**C # 016**  
Blue Texture  
C241-BL210



**C # 017**  
Gloss Blue  
T009-BL05



**C # 018**  
Gloss Blue  
H308-BL03



**C # 019**  
Blue Texture  
T032-BL04



**C # 020**  
Gloss Black  
P009-BK180



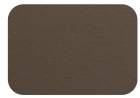
**C # 021**  
Gloss Black  
T005-BK78



**C # 022**  
Gloss Black  
P004-BK02



**C # 023**  
Black Texture  
C241-BK01



**C # 024**  
Brown Texture  
T032-BR62



**C # 025**  
Gloss Bronze  
P004-BR23



**C # 026**  
Gloss Gray  
P004-GR09



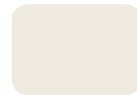
**C # 027**  
Gloss Gray  
P004-GR16



**C # 028**  
Gloss Gray  
H305-GR10



**C # 029**  
Gloss Gray  
P003-GR01



**C # 030**  
Gloss Off-White  
H303-WH16



**C # 031**  
Gloss Off-White  
P005-WH01



**C # 032**  
Gloss White  
T002-WH08



**C # 033**  
Gloss Ansi Gray  
T008-GR736



**C # 034**  
Gloss Gray  
P008-GR21



**C # 035**  
Gloss Gray  
T009-GR230



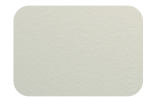
**C # 036**  
Gloss White  
T009-WH13



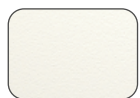
**C # 037**  
Gloss White  
P009-WH14



**C # 038**  
Gloss White  
H309-WH27



**C # 039**  
Beige Texture  
T032-BG03



**C # 040**  
White Texture  
T032-WH15



**C # 041**  
White Texture  
C031-WH120



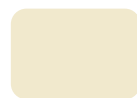
**C # 042**  
Gloss Beige  
T009-BG16



**C # 043**  
Gloss Beige  
P009-BG02



**C # 044**  
Gloss Beige  
T009-BG01



**C # 045**  
Gloss Off-White  
H308-WH25



**C # 046**  
Gloss White  
P009-WH04



**C # 047**  
Gloss White  
T009-WH11



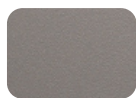
**C # 048**  
Gloss White  
T009-WH12



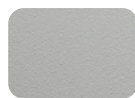
**C # 049**  
Gloss White  
T007-WH121



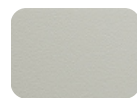
**C # 050**  
Gray Texture  
C241-GR484



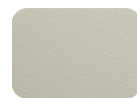
**C # 051**  
Gray Texture  
C241-GR305



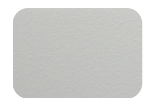
**C # 052**  
Gray Texture  
T243-GR522



**C # 053**  
Gray Texture  
T241-GR11



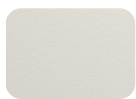
**C # 054**  
Off-White Texture  
T031-WH06



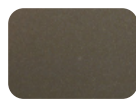
**C # 055**  
Gray Texture  
T243-GR301



**C # 056**  
Gray Texture  
T241-GR142



**C # 057**  
Beige Texture  
T241-BG137



**C # 058**  
Gloss Pearl Bronze  
T025-BR01



**C # 059**  
Gloss Pearl Gray  
T028-GR02



**C # 060**  
Gloss Silver  
T357-GR105



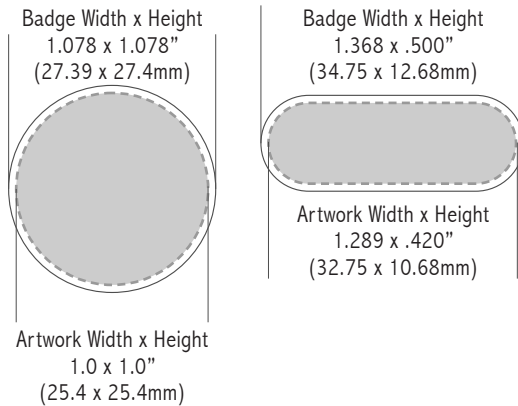
**C # 061**  
Gloss Silver  
T353-GR06

## BADGES

For more information on badges contact Rosemary Restrepo at Marking Systems: 972-475-0770 x 225 or [rosemary@markingsystems.com](mailto:rosemary@markingsystems.com).

### R1A Badge Sizing

Badge requires a 0.04" (1mm) inset from the outer most edges of the badge to insure artwork is not cropped, refer to gray fill shapes.

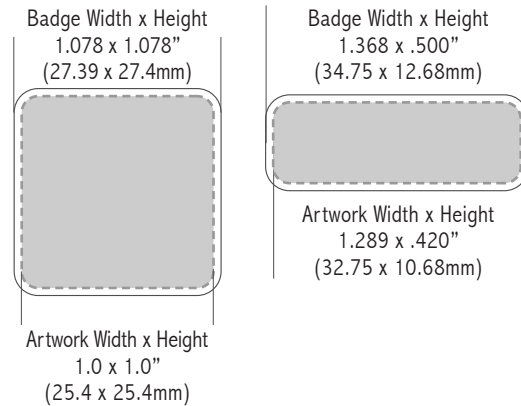


R1A examples (not actual size)

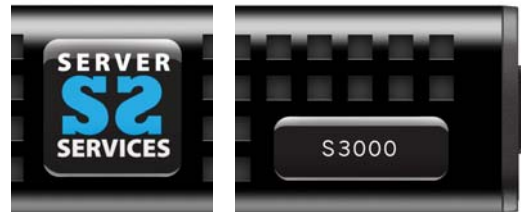


### S1A Badge Sizing

Badge requires a 0.04" (1mm) inset from the outer most edges of the badge to insure artwork is not cropped, refer to gray fill shapes.

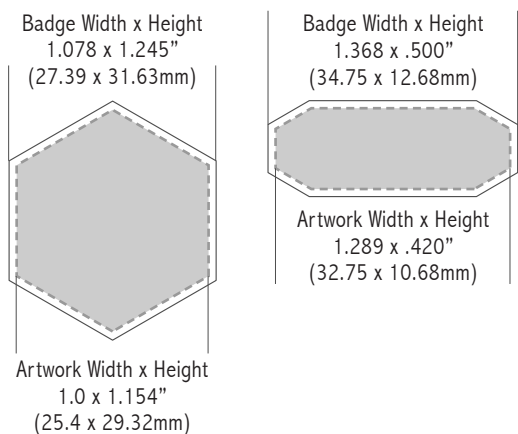


S1A examples (not actual size)



### H1A Badge Sizing

Badge requires a 0.04" (1mm) inset from the outer most edges of the badge to insure artwork is not cropped, refer to gray fill shapes.

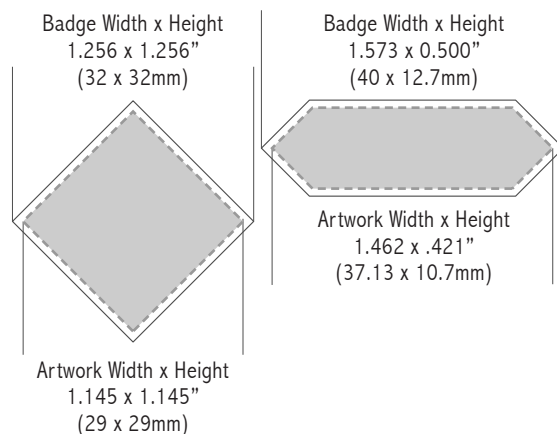


H1A examples (not actual size)

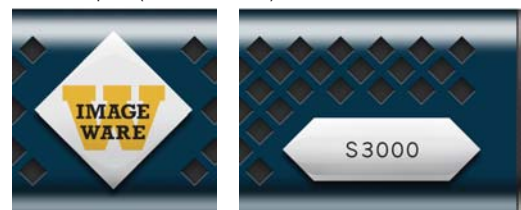


### D1A Badge Sizing

Badge requires a 0.04" (1mm) inset from the outer most edges of the badge to insure artwork is not cropped, refer to gray fill shapes.



D1A examples (not actual size)



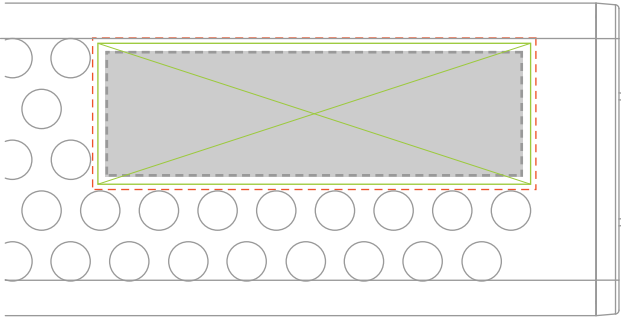


## DECALS (continued)

### R1B Badge Sizing

Maximum badge size is 2.25 x 0.734" (57 x 18.5mm) Green outlined box.

**Badge requires** a 0.04" (1mm) inset from the outer most edges of the badge to insure artwork is not cropped, Gray box.



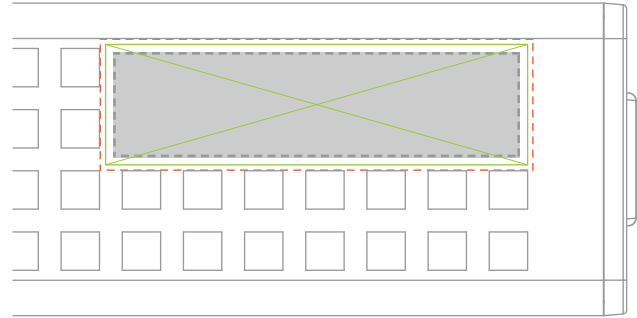
R1B example (Badge shown 2.118 x 0.466" / 53.80 x 11.83mm)



### S1B Badge Sizing

Maximum badge size is 2.188 x 0.63" (55.5 x 16mm) Green outlined box.

**Badge requires** a 0.04" (1mm) inset from the outer most edges of the badge to insure artwork is not cropped, Gray box.



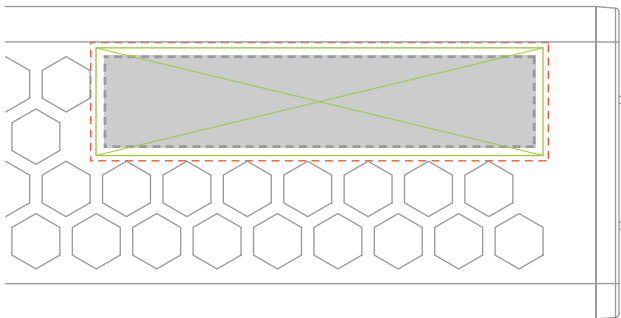
S1B example (Badge shown 2.111 x 0.517" / 53.62 x 13.13mm)



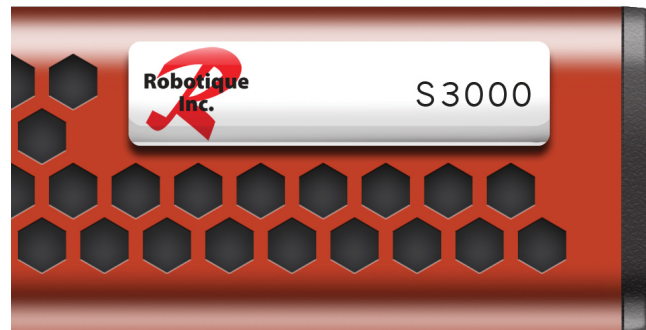
### H1B Badge Sizing

Maximum badge size is 2.313 x 0.56" (58.75 x 14.25mm) Green outlined box.

**Badge requires** a 0.04" (1mm) inset from the outer most edges of the badge to insure artwork is not cropped, Gray box.



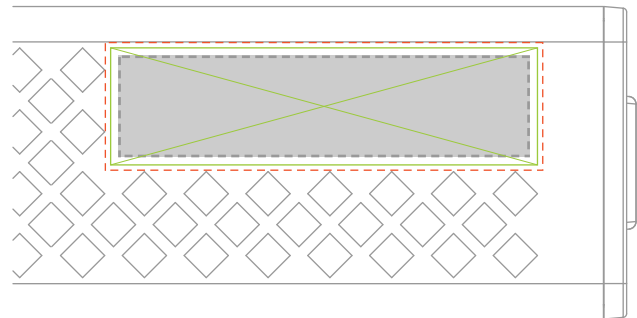
H1B example (Badge shown 2.111 x 0.517" / 53.62 x 13.13mm)



### D1B Badge Sizing

Maximum badge size is 2.23 x 0.61" (56.5 x 15.5mm) Green outlined box.

**Badge requires** a 0.04" (1mm) inset from the outer most edges of the badge to insure artwork is not cropped, Gray box.



D1B example (Badge shown 2.111 x 0.517" / 53.62 x 13.13mm)

